



The St. Lawrence Seaway Management Corporation

Market Development

508 Glendale Avenue, P.O. Box 370
St. Catharines, Ontario Canada, L2R 6V8

Tel +1-905-641-1932

Fax +1-905-641-2018

Saint Lawrence Seaway Development Corporation

Policy Headquarters

U.S. Department of Transportation
1200 New Jersey Avenue, S.E.
Suite W32-300
Washington, D.C. USA, 20590

Tel +1-202-366-0091

Fax +1-202-366-7147



www.hwyl2o.com



GO 

Water way to go!

Hard at Work in the Heartland of America – the Great Lakes St. Lawrence Seaway System



About Us

Hwy H₂O is a 3,700 kilometer marine highway that offers direct access to the commercial, industrial and agricultural heartland of North America. Comprised of the St. Lawrence River, the St. Lawrence Seaway, and the Great Lakes, Hwy H₂O runs between Canada and the United States and is a key component of the North American transportation network.

Annual commerce on the System exceeds 200 million net tons (180 million metric tons), and there is still ample room for growth. A wide range of cargoes move on Hwy H₂O including:

- Iron ore for the steel industry
- Coal for power generation and steel production
- Limestone for construction and steel industries
- Grain for overseas markets
- General cargo, such as iron and steel products and heavy machinery
- Cement, salt and stone aggregates for agriculture and industry
- Project cargo such as wind turbines destined for wind energy farms

The Great Lakes St. Lawrence Seaway System is serviced by a variety of international and domestic vessels that contribute to the efficiency of the System, including multi-purpose ocean vessels, tug and barge units, and a specialized lake fleet, of which many ships are equipped with self-unloading devices.



Unique Competitive Advantages

Strategic Location

Hwy H₂O is strategically located in the heartland of North America, providing shippers with seamless access to and from the heartland of the continent. Bordering two Canadian provinces and eight U.S. states, ports along the System include several of North America's larger cities. Over 150 million potential customers live within an 8 hour drive of the ports along the waterway. With major highways and rail lines linking the ports of the System with consumers, products, and industries all over North America, Hwy H₂O is in the centre of an interconnected transportation corridor.

Reliable

Hwy H₂O has the immediate capacity to significantly increase its traffic volumes. Cargo moves dependably on the waterway, allowing for timely delivery and bringing cargo closer to its final destination without congestion. Innovative technologies and state-of-the-art facilities complement our safe and reliable service record. Working in concert with other modes of transportation, Hwy H₂O meets your transportation needs safely and efficiently.

Cost Effective

Hwy H₂O saves shippers time and money by providing a more direct route to and from the North American heartland. It is a key source of competitive advantage to industries located along the waterway.

Hwy H₂O is cost competitive with other gateways and is continuously working with its partners to improve its economic advantage. Its ports offer competitive wharfage and stevedoring rates, and the St. Lawrence Seaway boasts a flexible toll structure with new incentives designed to save you money and deliver value for your transportation dollars.



Strategic Location
World-wide access to the heartland of North America




Reliable
Consistent service record, delivering your cargo on schedule



Cost Effective
Hwy H₂O saves you time and money



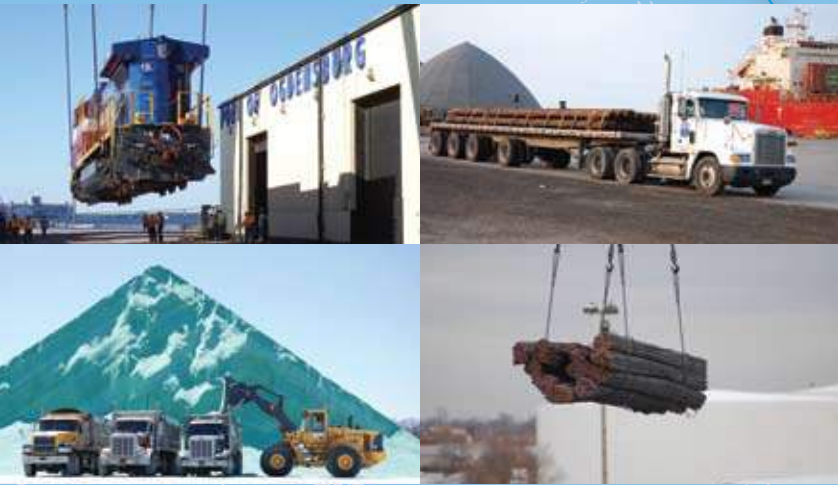
Legend

 Hwy H₂O Port Partners



Location, Location, Location

Serviced by some 41 international and regional ports, Hwy H₂O is ready to meet your transportation needs. Ports along the waterway are well-equipped with purpose-built infrastructure, experienced labour force and land access area to accommodate a wide variety of cargoes, including project and break bulk cargoes. An excellent network of intermodal facilities connects the ports to major North American markets and keeps product moving to its final destination.



150 million people live within an 8 hour drive of one of our 41 ports





Go Straight to the Source - Hwy H₂O

Short-Sea Shipping

Hwy H₂O's short sea shipping services are steadily gaining momentum as new services are developed and shippers learn the benefits of moving their goods via the waterway. Short Sea Shipping provides customers with an important alternative option, adding reliability and diversity to the supply chain while complementing existing routes. It also reduces congestion on roads, highways and at borders— ultimately reducing harmful greenhouse gas emissions.

Go Blue - Go Hwy H₂O

Marine transportation is an environmentally friendly transportation solution. For example, for every kilometer that a vessel carries a ton of cargo, marine transportation is more energy efficient and emits fewer CO₂ emissions than other modes of transport. Shipping via the waterway alleviates traffic congestion and reduces road maintenance and repair costs. Even so, the industry recognizes that it does have an impact on the world around it. The shipping community is working together with environmental agencies and governments to promote environmental stewardship and minimize its environmental impact.